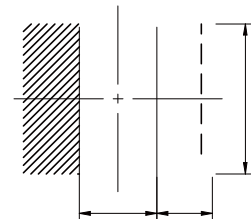




- Magnetic resin for higher current and semi-magnetically shielded
- Quantity: 2000pcs

- DC/DC converter
- LC filter



(μH)	Tolerance	Saturation		
		(A)	(A)	(mm)
		3.00	2.90	21
		2.20	2.20	33
		2.05	2.10	40
		1.90	2.00	48
		1.62	1.85	55
		1.50	1.70	68
		1.20	1.55	75
		1.05	1.35	100
		0.90	1.25	120
		0.80	1.10	160
		0.75	1.00	190
		0.60	0.89	265
		0.45	0.72	430
		0.42	0.55	630
		0.35	0.45	800
		0.36	0.46	875
		0.27	0.35	1450

Operating temperature: -40°C ~ +125°C

Temperature rise current: the actual value of DC current when the temperature rise is T40°C

Saturation Current that will cause initial inductance to drop approximately 30%

