

BCMA Series

Common Mode Filters For Automotive Signal Line

Size 4532

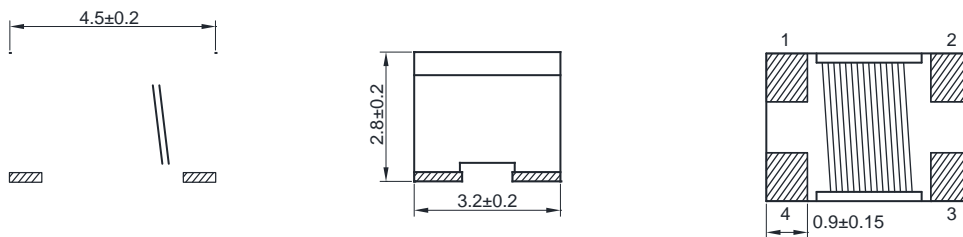
FEATURES

Impedance variation: Extensive lineup are available for compatibility with various usages
 Common mode filters for Signal Line
 Operating temperature range: -40 to +125
 AEC-Q200 qualified
 Quantity: 500pcs

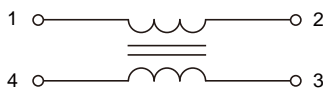
APPLICATION

Radiated noise suppression for car multimedia interfaces (MOST, USB2.0, IDB-1394, etc.)

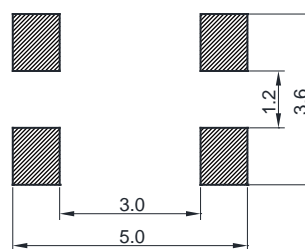
Dimensions: [mm]



Schematic:



Land Pattern: [mm]

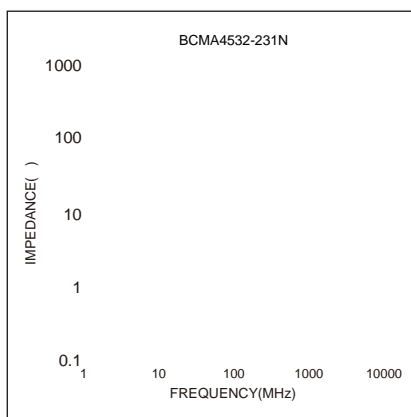
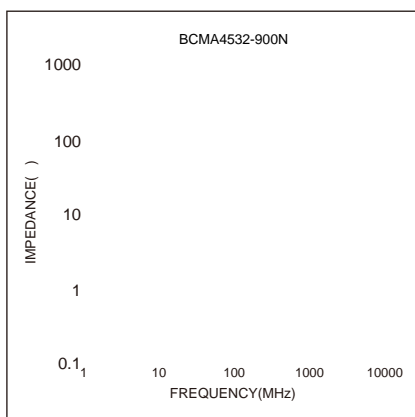


Electrical Properties:

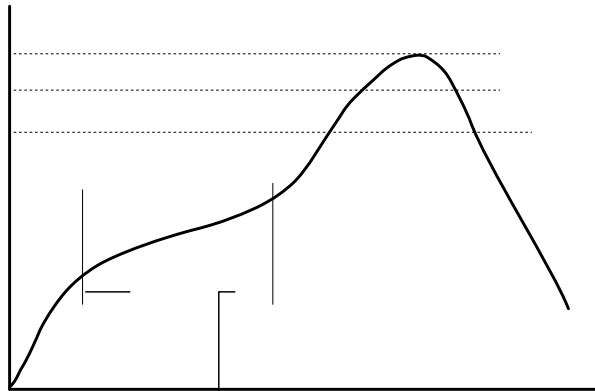
| Part No | Z @ 100 MHz Min. | Z @ 100 MHz Typ. | I _R Max. | R _{DC} Max. | V _{DC} Max. (V) | IR Min. |
|---------------|---------------------|---------------------|------------------------|-------------------------|--------------------------------|------------|
| BCMA4532-900N | 68 | 90 | 4000 | 0.050 | 50 | 10M |
| BCMA4532-231N | 173 | 230 | 3500 | 0.050 | 50 | 10M |
| BCMA4532-601N | 450 | 600 | 2500 | 0.060 | 50 | 10M |
| BCMA4532-901N | 650 | 900 | 2300 | 0.070 | 50 | 10M |
| BCMA4532-142N | 1000 | 1400 | 2000 | 0.100 | 50 | 10M |
| BCMA4532-282N | 2100 | 2800 | 900 | 0.350 | 50 | 10M |

Temperature Rise Current: The actual value of DC current when the temperature rise is T=40°C

Typical Electrical Characteristics:



Soldering Reflow:



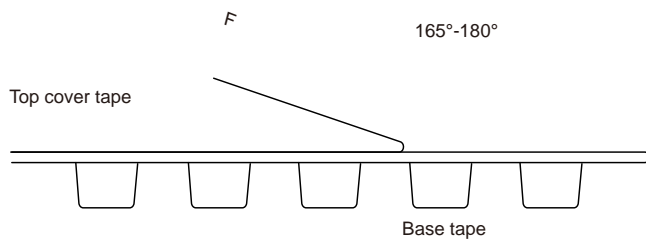
Preheat condition: 150 ~200 / 60~180 sec.
 Allowed time above 217 : 60~150 sec.
 Max temperature: 260 .
 Max time at max temperature: 10 sec.
 Allowed Reflow time: 3x max.

Packaging Information:

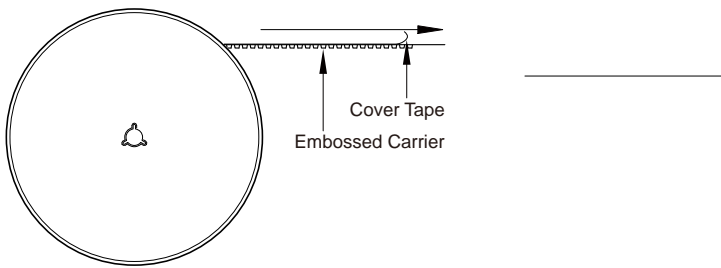
Tape Dimension :

| Series | A0 (mm) | B0 (mm) | D (mm) | P0 (mm) | P1 (mm) | W (mm) | K0 (mm) | E (mm) | T (mm) |
|------------|----------|-----------|-----------|------------|------------|--------------|----------|-------------|--------------|
| 45? 3& %\$ | %&f " ž# | &ž+f " ž# | #ž f " ž# | &ž' f " ž# | *ž' f " ž# | #\$ž' f " ž% | %&f " ž# | #ž)' f " ž# | " ž\$(f " ž' |

Peel force of top cover tape:



Reel Dimension : [mm]



Cautions and Warnings:

Storage Conditions :

- The storage period is within 12 months after the completion of production. Be sure to follow the storage conditions (tefa8c4 0e to follow the storage condi -

-

-

-

Operation Instructions:

-

-

-

-